



PARTNER

Introduction to the PARTNER Network

AIM OF PARTNER

To build a national rural practice-based research network of 90 rural general practices and a related database that together create a clinical trial development and participation resource for:

- Rural Australians
- Rural primary health care professionals
- Researchers.

The PARTNER Network, led by the University of Melbourne, is a national collaboration between five universities and the Royal Flying Doctor Service. The PARTNER Network is a national network of rural general practices supported by local state and territory-based research hubs. These support local general practice involvement in clinical trials.

The PARTNER Network is part of the Australian Teletrial Program (ATP), being led by Queensland Health. The ATP is funded by the Medical Research Future Fund (MRFF) National Critical Infrastructure Initiative, 2019 Rural, Regional and Remote Clinical Trial Enabling Infrastructure grant.

The PARTNER Network incorporates Torch Recruit™, along with GRHANITE®, the Patron primary care repository, and the Data for Decisions initiative at the University of Melbourne. Their use is compliant with national and international best practice guidelines.

PARTICIPATING IN THE PARTNER NETWORK

This pack is for those considering becoming a PARTNER Network Partner. It contains:

1. Cover Letter (this document)
2. Invitation (1-page explainer for ease of circulation at your practice)
- 3A. Information for General Practices (2-page extended information)
- 3B. Information for Patients (brochure)
4. Consent to Participate for General Practices (**sign and return to participate**)
5. Agreement for the Provision of Data (**sign and return to participate**)
- 5A. Data Sharing Agreement Summary (explains participation and document 5)
6. GRHANITE® Site Installation IT checklist (sign and return)
7. Introduction to GRHANITE® (explainer)
8. Data Privacy and Security (explainer)
9. GRHANITE® Patient Withdrawal Instructions
10. Torch Recruit™ GP Agreement (**sign and return to participate**)
- 11A. Torch Recruit™ Invitation to General Practices
- 11B. Torch Recruit™ Information for General Practices

The PARTNER Network is led by a national team of academic general practitioners. These include:

- Prof Jon Emery (University of Melbourne)
- A/Prof David Gonzalez-Chica (University of Adelaide)
- A/Prof Andrew Kirke (University of Western Australia)
- Prof Jan Radford (University of Tasmania)
- Dr Zoe Schofield (Royal Flying Doctor Service of Australia)
- Prof Nigel Stocks (University of Adelaide)
- Prof Katharine Wallis (University of Queensland)

KEY POINTS

- All patient and practitioner-related information is de-identified before it leaves your practice and researchers cannot identify individual clinics
- PARTNER enables your practice to be involved in research without GPs and other staff having to divert time to the activities (the research meets RACGP and ACRRM standards)
- PARTNER also provides opportunities for practices interested in active involvement in research (e.g. invitations to trial or other studies)
- Whole of practice approach involving all practice staff
- The University of Melbourne and Torch Recruit™ maintain high levels of data security and management across all research initiatives with collected information held only within controlled, on-shore, data storage facilities
- The research program is not-for-profit and adheres to strict ethical principles
- An independent Data Governance Committee ensures data governance and compliance
- We are committed to making research outcomes accessible with research projects and their outcomes available on the PARTNER website.

CONTACT DETAILS:

The **PARTNER** Network
Department of General Practice

780 Elizabeth Street
The University of Melbourne
Victoria, Australia 3010

03 8559 7176

Email:
partner-network@unimelb.edu.au

Web:
www.partnernetwork.com.au



Prof Jon Emery



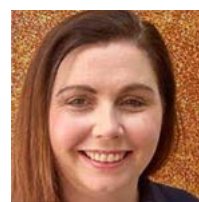
A/Prof David
Gonzalez-Chica



A/Prof Andrew Kirke



Prof Jan Radford



Dr Zoe Schofield



Prof Nigel Stocks



Prof Katharine Wallis

Australian Teletrial Program
Access to clinical trials, closer to home

