

SEPTEMBER 2025

THE PARTNER NETWORK

BULLETIN

GET INVOLVED

Welcome to the PARTNER Network Bulletin where we bring members opportunities to participate in cutting-edge research and practical solutions to enhance healthcare in rural communities.

[Read More on our website](#)



Geelong, Vic

Your Quarterly Research Round-Up – September 2025

Welcome to the September edition of our PARTNER Bulletin. As we move into the final quarter of the year, this issue brings fresh insights and updates from the ever-evolving field of primary health research.



PARTNER Team members present at AAAPC



PARTNER Network Resources



[PARTNER Network Website](#)

[PARTNER GP training Module](#)

THE PARTNER NETWORK

NETWORK UPDATES

Meet our Community Advisory Members



Kathryn
SA CAG MEMBER

Kathryn is a dedicated member of the Port Lincoln community in South Australia, with deep, lived experience navigating the primary health system following her husband's diagnosis with a rare medical condition in 2004. As both a consumer and carer, she is a passionate advocate for improving access to primary healthcare and strengthening primary health research across Australia. Kathryn brings invaluable community insight and a strong voice for equity to the group.

Are your privacy collection notices up to date?

In April, the RACGP updated its recommended wording for privacy collection notices to broaden the stated purposes of data collection.

To see the most recent wording

[CLICK HERE](#)

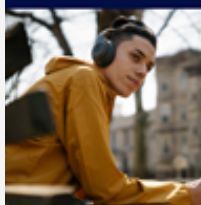


PARTNER Updates

- Dr Suzie Harte proudly represented PARTNER at the Australasian Association for Academic Primary Care (AAAPC) Conference 2025 in Geelong, Victoria. The conference provided a valuable platform to share the network's progress and highlight the growing trial infrastructure, sparking conversations about the future of primary health research across Australia.
- State Coordinator Natalii presented at the recent Rural Doctors Association of QLD GP Networking session, providing an introduction to PARTNER and discussed the current trials actively recruiting in the local area.
- PARTNER has now welcomed 99 practices to the network with representation from all states and territories involved in the program.

Diagnosing and Managing Youth Mental Illness in Primary Care

New 8-week, online course



Starts:
6 October 2025



[Learn More](#)

New Online Micro Credential:

Diagnosing and Managing Youth Mental Illness in Primary Care

More than 75% of mental health issues occur before the age of 25. Early intervention is the key to achieving better long-term mental health outcomes for young people. Gain youth-specific skills to support the diagnosis and management of young people's mental health with this new 8-week, online micro credential.



For more info / To register

[CLICK HERE](#)

PARTNER RESEARCH OPPORTUNITIES

DUE TO START RECRUITING IN 2025



Internet-delivered Primary Care for shoulder Pain

Summary: Rotator cuff-related shoulder pain is common, affecting about 1.8 million Australians, with 40% experiencing disability beyond 12 months. The project aims to compare the effectiveness of internet-delivered care +/- telehealth added to usual care versus usual care alone on pain and disability pain, waiting times, quality of life, global change, and psychological/cognitive outcomes such as outcome expectations. Practice payments include \$100 per patient and for patients \$50 at three timepoints.



ROSELLA: Implementation of risk-stratified population screening for Australia's most common cancers

Summary: Hybrid effectiveness-implementation study of a genomic cancer risk assessment for melanoma, prostate, breast, and bowel cancer. It seeks to determine how best to deliver cancer risk assessment via a DNA test at scale within general practice to recommend personalised cancer screening to the Australian population.

CURRENTLY RECRUITING

IMPACT Program

Summary: Opioid-based approaches to pain management are commonly adopted in Australia despite evidence of limited effectiveness and adverse impacts. IMPACT aims to support GPs to explore non-pharmacological approaches to pain management with their patients by enhancing resources to biopsychosocial assessment and treatment planning.

GP Requirements:

- Enrol up to 10 eligible QBE Insurance compulsory third party patients
- Longer consult to assess and treat biopsychosocial factors related to pain
- Complete and submit brief IMPACT consultation summary and invoice for payment

Participating GPs Receive:

IMPACT Program remuneration

- \$1,860 per eligible patient for standard care
- \$4614 per eligible patient for IMPACT Program care
- Access to pain specialist via telehealth

Recruiting in SA & VIC



CONSEP: CoNn Syndrome Evaluation in Primary care

Summary: Hypertension, the leading risk factor for death in Australian general practice. Around 10% of people with hypertension have a potentially curable cause: primary aldosteronism (PA) or Conn syndrome. Early detection of PA using a simple blood test, permits effective treatment. However, eligible patients are hardly ever screened for the condition. CONSEP will test whether education and/or clinical decision support can increase PA screening among patients living with hypertension.

GP Requirements:

- Attend a practice-based education session
- Screen adult patients that meet study criteria

Participating GPs Receive:

- Access to CPD accredited resources
- \$1500 in practice reimbursement payments

Recruiting in SA, VIC, TAS

REAFFIRM: Regional tEletrial Assessing Feasibility of clinical education + Reinforcement for Menopause care

Summary: One in four Australians are in or approaching peri-/menopause, of which 85% will be symptomatic. REAFFIRM aims to test the feasibility of a simple intervention to raise menopausal-awareness and training in primary care clinicians to improve national care & outcomes.

GP Requirements:

- Complete demographic & peri-/menopause & practice questions
- Complete the VITAL registry questionnaire & review 3 validated questionnaires
- Complete a free online education package
- Identify and consent 5 or more eligible patients

Participating GPs Receive:

- Up to \$1815 for each clinician completing the course
- Access to fully paid education modules

NATIONAL

EQUIPP: EQUIpping the general Public to prevent and overcome chronic Pain

Summary: The project aims to test a method of co-designing and delivering public messaging and education around chronic pain in rural populations.

GP Requirements:

- Undertake the University of South Australia's 'Pain Revolution' Local Pain Educator Program (LPE)
- Co-design the EQUIPP intervention with their local community, attend an information and training session about the co-designed intervention, assist with advertising/promoting the project to potential community member participants
- Practices invited to attend an information and training session about the co-designed intervention

Participants will receive:

- \$130/hr (\$260-290 total/workshop), travel allowance of \$40 total/workshop

Recruiting in SA & VIC

IDEAL Care: Identifying Advanced Liver Fibrosis in Primary Care

Summary: Chronic liver disease is common with 1 in 4 Australians having fatty liver. Those living with advanced liver fibrosis are at greatest risk of developing hepatocellular carcinoma and liver failure. IDEAL aims to assess the effectiveness, cost-effectiveness, and implementation context of an integrated liver fibrosis detection pathway in detecting unrecognised advanced liver fibrosis in at-risk patients in primary care.

GP Requirements:

- Complete a GP Education package
- >1000 active patients aged 45-75 years
- Minimum of 3 GPs within the practice willing to participate
- Install Future Health Today software and follow prompted treatment pathway (intervention arm only)
- Installed or willing to install GRHANITE software
- Not currently or previously participated in the IC3 Trial

Participating GPs Receive:

- \$1500 software reimbursement to cover administration
- GPs across collaborating practices will participate in a 2 hour CPD education module

Recruiting in VIC, WA



MedCan 3: Medicinal Cannabis

Summary: People with advanced cancer may experience a large range of distressing and difficult to manage symptoms. MedCan 3 aims to relieve symptom burden in patients with advanced cancer by assess the effect of escalating doses of THC/CBD 1:20 vs placebo on total symptom distress scores.

GP Requirements:

- Referrers continue to provide normal clinical care
- Trial staff prescribe, dispense drug & monitor patients

Recruiting in QLD



Seeking General Practitioner input!

Help improve care and support for people with traumatic brain injury (TBI) Australia-wide.

By completing this 5-10 survey you will help to create understanding on experiences, care pathways and training needs in providing care following TBI.

Click or scan the QR code to take part.



REST UP: Research and Evaluation Study of digital Treatment of insomnia in Underserved Populations

Summary: To improve access to, and quality of care, for chronic insomnia in priority populations. Participating general practices in rural and regional Australia will use digital tools to identify people with insomnia prescribed sedative/hypnotic medications.

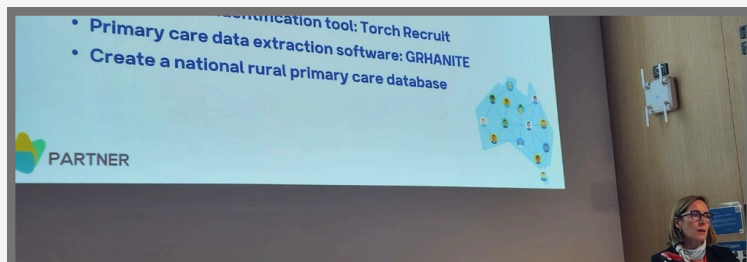
GP Requirements:

- Contribute to the patient recruitment using EMR or Torch Recruit to identify eligible patients and send invitation to participate via email/SMS
- Identify a contact person who can respond to questions from patients
- Providing of digital resources to patients or digital program along with proactive onboarding and two follow up visits (clinician guided CBTi arm)

Participating GPs Receive:

- Opportunity to access online Cognitive and Behavioural Therapy for Insomnia
- Access and mentoring from CI Le Plastrier who has a background in psychiatry
- Reimbursed \$100 per patient recruited
- Practice champion gift voucher

NATIONAL



COLCOT-T2D: Colchicine and aspirin in cardiovascular outcomes for T2D

Summary: People with Type 2 diabetes are more likely to develop cardiovascular disease. Colcot-T2D aims to evaluate the efficacy and safety of colchicine and non-enteric coated aspirin, combined or alone, to improve cardiovascular outcomes in high-risk patients with type 2 diabetes.

GP requirements:

- Patient identification
- Dissemination of study information via letter or email
- Baseline & 6 monthly visits can be by practice nurse or Curtin research nurse
- provide medical updates (with pt consent) for approx 3 year follow up period

Participating GPs receive:

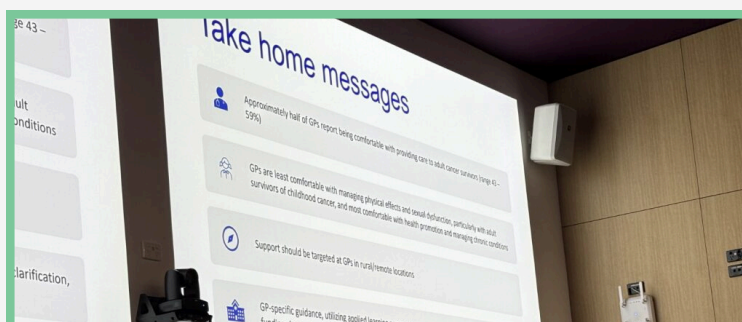
- Up to \$800 reimbursement payment per completed participant
- Site training and support

Recruiting in WA

OPTIMAS-GP: The Optimal Implementation of Antimicrobial Stewardship in General Practice

Summary: Combating antimicrobial resistance is a global health priority. The OPTIMAS-GP study will investigate the most effective means of implementing evidence-based antimicrobial stewardship activities in general practice surgeries. The OPTIMAS-GP study is codesigned with consumers and doctors to safely reduce antibiotic prescriptions for respiratory tract infections, with sustainability of the activities a key goal.

Recruiting in TAS, VIC, NSW



CASSOWARY: Cancer genomic risk ScOres in primary Care

Summary: The primary objective is to test the effect of a complex intervention (personalised cancer risk estimate for melanoma, colorectal and breast or prostate cancer [derived from a polygenic risk score], and tailored screening recommendations) on screening behaviour for general practice patients aged 40-59 years.

GP requirements:

- Distribution of trial material
- Follow up discussion with patients on cancer screening

Participating GPs and patients receive:

- Practice payment of \$1000 for <25 pts recruited, \$1500 for 25-50 pts recruited, \$2000 for 50-70 pts recruited and \$3000 for >75 pts recruited
- Patients who complete the post-trial interview will receive a \$50 reimbursement

Recruiting in VIC

PIA-STUDY: Probucol in Alzheimer's Study

Summary: Scientists have discovered that a build up-up of molecules in the blood may cause damage to the brain capillaries, potentially associated with Alzheimers. The primary objective of this trial is to evaluate the efficacy of probucol (Lorelco) on cognitive performance in patients with Alzheimer's disease (AD) over a 104-week treatment period.

GP requirements:

- Patient identification and referral
- distribution of trial brochures
- May assist in gathering of baseline data- by negotiation

Participating GPs receive:

- Training materials and ongoing support

Recruiting in TAS, SA, WA

EMPOWER

Summary: Aims to evaluate the effectiveness of a text message support program called EMPOWER-SMS-GP on breast cancer survivors' health outcomes. EMPOWER aims to deliver direct health support to breast cancer survivors.

GP requirements:

- Search for eligible patients
- Send 1 personalised text message to eligible patients

Participating GPs receive:

- \$200 reimbursement + CPD hours **NATIONAL**

EASY-AS: Early valve replacement in severe ASymptomatic Aortic Stenosis

Summary: The EASY-AS trial is testing the best way to treat people with severe but asymptomatic aortic stenosis. Help to address a fundamental unresolved question in cardiology: The relative benefits of early AVR versus watchful waiting in asymptomatic patients with severe aortic stenosis.

GP requirements:

- Patient identification and referral
- Distribution of trial information

NATIONAL



Do any of these research projects interest you?

A **PARTNER State Coordinator** will be in touch soon to offer more information. Alternatively please email the partner-network@unimelb.edu.au with any enquiries!

Do you have a research study recruiting in rural primary care clinics?

complete our investigator-led clinical trial enquiry form.

[click here to enquire](#)